

## **MGOC Spares & Accessories**

# **MGB , GT & Midget 1/4 Light Seal Replacement Guide**

Applicable for:

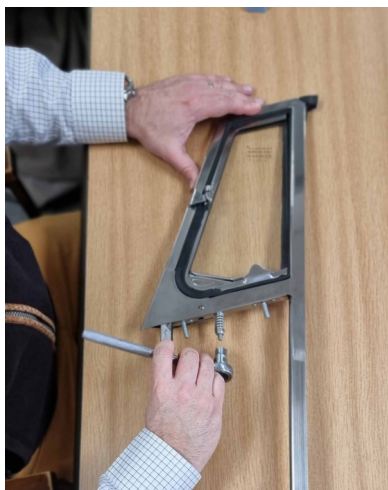
- 17H2506
- 17H2505
- AHH7436
- AHH7435
- AHA7416
- AHA7417

The following walk through is designed to facilitate replacement of the quarterlight seal on MGB, GT and Midget.

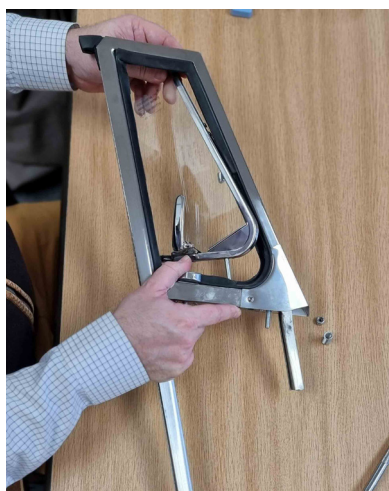
Note, the guide shows the quarterlight removed from the door assembly. Please refer to the factory workshop manual to remove the quarterlight from the door which will include removal of the door card, capping and quarterlight blanking grommets to gain access to the quarterlight fixings. The outer weatherstrip can be left in place along with the door glass and window mechanism.

The seal replacement illustrated below has been performed on an MGB Roadster quarterlight assembly. The same approach should be used when replacing the seal on MGB GT or Midget quarterlight assemblies.

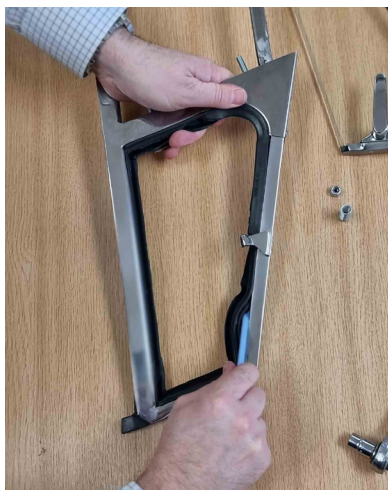
If you require further installation advice, please contact  
sales@mgocspares.co.uk  
MGOC Spares, Octagon House, Cambridge. CB24 4QZ  
www.mgocspares.co.uk  
(T) 01954 230928



1. Take a picture of the stud and nut at the base of the assembly.
2. Remove the nut and spring and set aside.

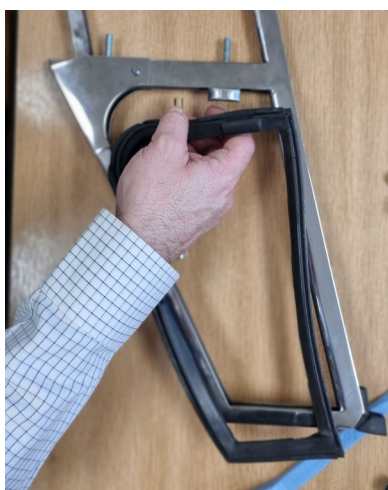


3. Turn the handle and place the glass in the open position.
4. Whilst holding the frame in one hand and the glass in the other, carefully lift the glass away from the frame.



5. Starting at the top of the frame, carefully pry off the seal using a suitable trim removal tool. We used the Bojo Evolution Trim Tool Kit (Z602).

6. At the base of the frame and seal is a brass spacer.



7. Remove the seal from where the brass spacer is located.
8. Remove the brass spacer from the seal and set aside.



9. Position the new seal in the frame

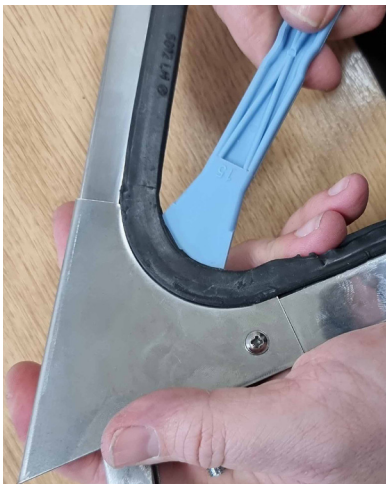
10. Starting from the top, carefully pry the seal into the frame recess, working towards the corners.



11. Use one hand to grip the seal against the frame whilst working the seal into the recess on each side.

Tips:

- Work in small sections
- You will need to ensure the seal is seated on both sides of the frame



12. Once at the bottom of the frame, ensure the seal is positioned correctly into each corner.

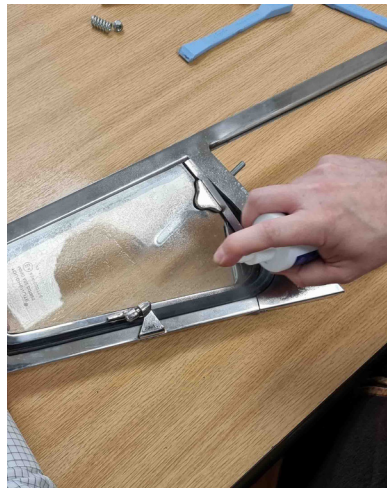
13. pry the seal into place on the bottom edge of the frame.



14. Gently pull on the seal to ensure it's properly seated the whole way around the frame on both sides.

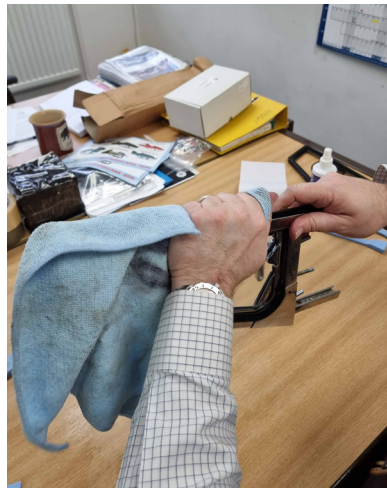


15. Reinstall the brass spacer by pushing it in from the seal side. The spacer should sit flush with the inside edge of the seal.



16. Position the glass in the "open" position and feed the stud through the brass spacer. Locate the two pivot hinges and place the glass in position.

17. Spray the seal with silicon spray.



18. Close the window and turn the handle to the shut position.

19. Wipe off the excess silicon spray.



20. Return the spring to the stud and then the nut. Tighten the nut exposing the same amount of thread as when you started.