



Universal Fog Lamp Kit M120



Kit Contents:

ALU1017	Rear Fog Lamp	x 1
GAE132Z	Illuminated Switch	x 1
GHF120	5/16 Screw	x 2
GHF301	5/16 Washer	x 2
GEX7250	Insulating Washer	x 2
GHF332	5/16 Spring	x 2
NH105041	M5 Nut	x 2
GHF300	Plain Washer	x 2
GHF331	Spring Washer	x 2
GEX7194	Mounting Strap	x 4
EC300A	Wire Black 25Amp	x 1
EC300G	Wire Black 25 Amp	x 6
GHF423	Screw No 8	x 1
GHF321	Shake Proof Washer	x 1
2H3406	Single Bullet Connector	x 2
GHF2200	Bullet Terms	x 2
ET22	Earth Eyelet	x 2
ET14	Piggy Back Terminal	x 1
ET44	Micro Spade Terminal	x 1
ET9	Female Spade	x 3
UKC4447	Fuse Holder	x 1
GFS3015S	Fuse 15 Amp	x 1
NCS100	Cable Ties	x 4

Tools Required:

Snips
 Wire Strippers
 Wire Crimps (Optional)
 Soldering Iron and Solder (Optional).
 Electric Drill
 Drill Bit 3mm
 Posi Driver
 1/2" Spanner

Instructions

1. Disconnect your vehicle's battery
2. Decide on a convenient location for the fog lamp. Driving regulations state that fog lamps must be mounted towards the centre or offside (RH) of the vehicle and at least 100mm away from the driver's side stop lamp. On chrome bumper MGBs we recommend that you mount the fog lamp to the RH rear bumper bracket using the mounting straps and fixings provided.

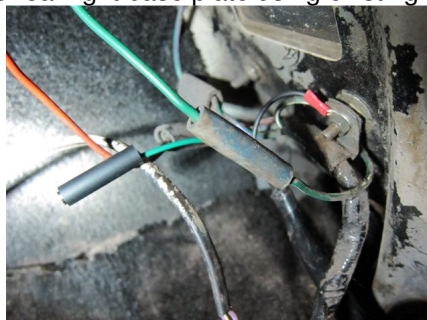


Pre Assembly



Locating the Lamp

3. Having secured the lamp, feed both fog lamp wires between the driver's side valance and the bumper iron and pass through the driver's boot floor corner.
4. Snip off the black (earth) bullet terminal, strip the wire and crimp on a 2BA eyelet. Secure the earth to the rear light base plate using existing fittings.



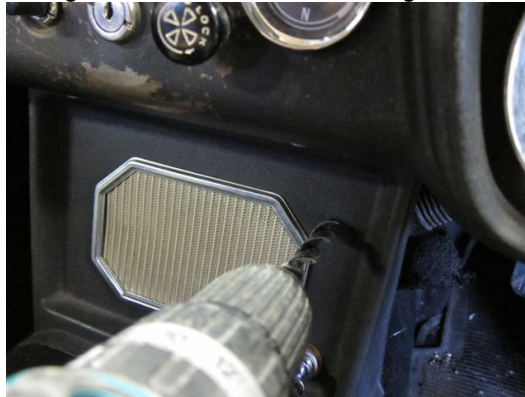
Secure the Earth to the Rr Lamp

5. Run the green wire through the bulkhead service grommet, located adjacent to the wiper motor on the driver's side and alongside the pedal box cover to the fuse box, snip, strip and crimp on a red female spade connector and secure the green wire to the in-line fuse holder.
6. Locate a suitable live feed from the fuse box using the in-line fuse holder. (A piggy back terminal has been supplied in the event live connections are limited).
7. Decide on a suitable location for mounting the switch allowing for clearance of the rear terminals and ensure that the illuminated face remains within view of the driver during operation. (We recommend mounting the switch on the centre console).



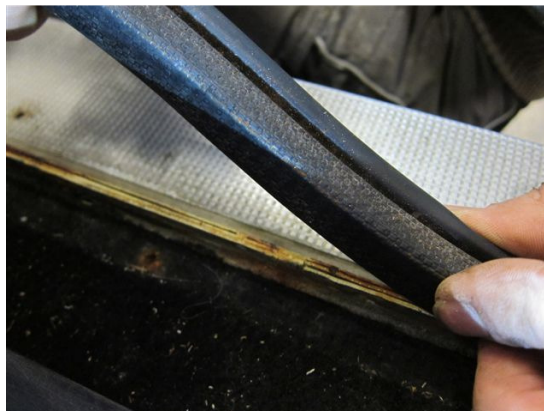
Locating the Switch

8. Unscrew and set to one side the switch head, bulb and outer securing bezel, mark the switch location and pilot drill a 5mm hole, before drilling out to 13mm. Secure the switch to the panel using the bezel nut before refitting the bulb and switch head.



Drill a 13mm hole to locate the switch

9. Run the feed wire to the switch then cut, strip and crimp on a female spade connector before making the connection on either of the two spade terminals.
10. Strip the remaining green wire and crimp on a female spade connector and connect to the opposing terminal on the switch.
11. In order for the internal illuminated switch to function the switch must be earthed. We recommend you use a short length of black earth wire and crimp on a micro connector. Run the black wire to earth under the dashboard using the supplied screw and shake-proof washer.
12. Route the switch green wire back under the dashboard to the rear of the car. The cable can either be chased behind the trim panel work and under the door seal (as shown) or brought underneath the car.



Run the switch feed to rear of car.

13. Snip the green switch feed to the desired length, remembering to allow sufficient length to crimp or solder on a bullet connector.
14. Connect the switched feed to the green fog lamp wire, re-connect the vehicle's power supply and test for operation.



Test the illuminated switch



Test lamp function

15. Finally secure any loose cable using cable ties and re-fit any removed components.

If you require further installation advice please contact sales@mgocspares.co.uk
MGOC Spares, Octagon House, Cambridge. CB24 4QZ
www.mgocspares.co.uk T 01954 230928